

GRSC COURSE CARD (Rev June 2020)

Wednesday Start Sequence

6:55	First Warning
7:00	JAM Start
7:05	SPIN Warning
7:10	SPIN Start

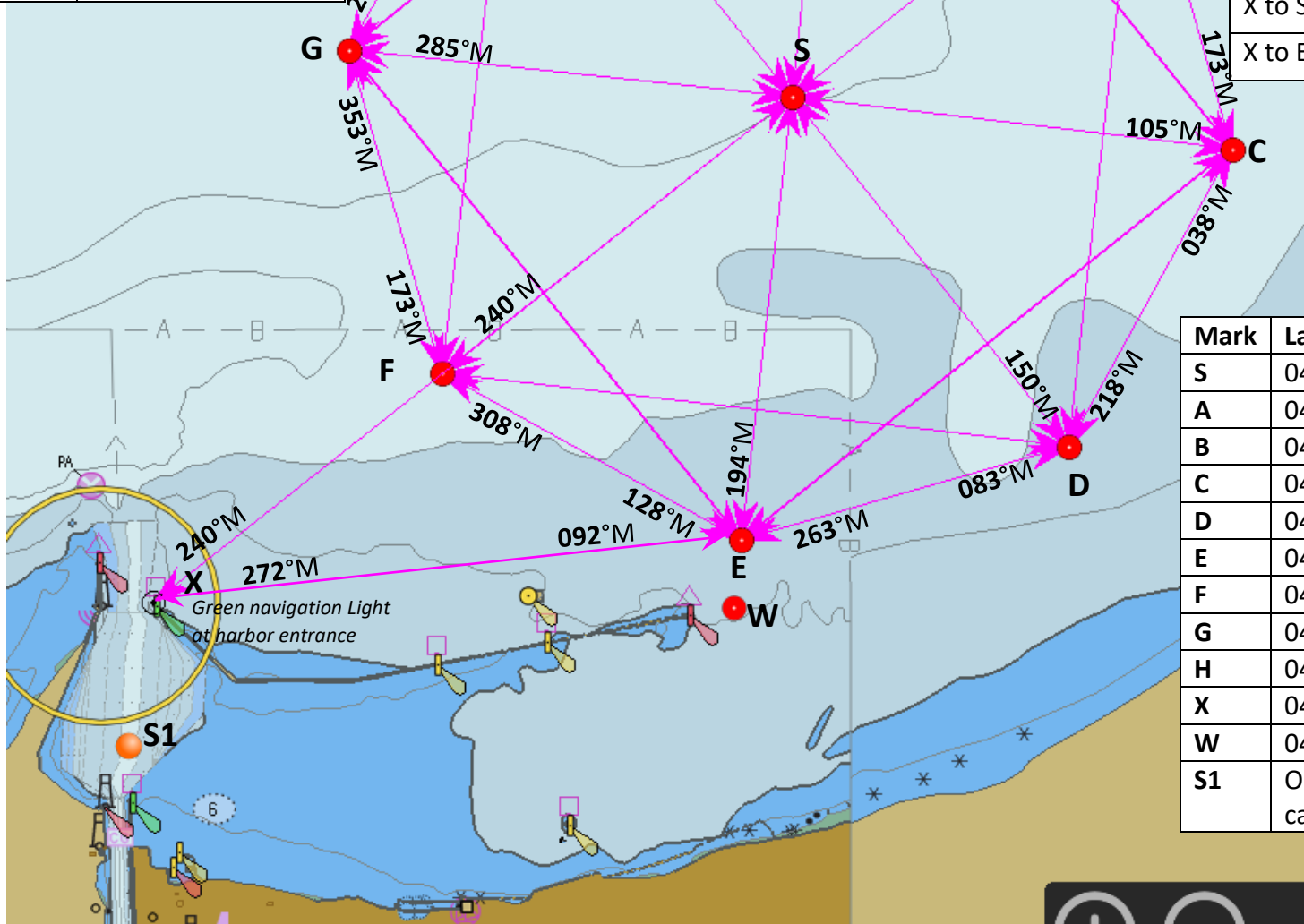
Note 1: Wednesday races AFTER LABOR DAY will be inside the wall starts with first Warning at 6:25

Note 2: Sunday Start times announced by race committee at beginning of series

Distance and Headings are Approximate. All marks are orange spar buoys unless otherwise noted.

Distance between marks:

S to Perimeter	0.85 nm
Between perimeter marks	0.65 nm
Between every other perimeter mark	1.20 nm
X to S	1.55 nm
X to E	1.14 nm



Mark	Latitude	Longitude
S	041° 47.05' N	081° 15.09' W
A	041° 47.89' N	081° 14.97' W
B	041° 47.58' N	081° 14.20' W
C	041° 46.95' N	081° 13.96' W
D	041° 46.38' N	081° 14.38' W
E	041° 46.20' N	081° 15.22' W
F	041° 46.52' N	081° 15.99' W
G	041° 47.14' N	081° 16.23' W
H	041° 47.71' N	081° 15.80' W
X	041° 46.08' N	081° 16.73' W
W	041° 46.07' N	081° 15.24' W
S1	Orange inflatable set by fleet captain	